

RPA056Si01 100µg

Recombinant Interleukin 10 (IL10)

Organism Species: *Rhesus monkey (Simian)*

Instruction manual

FOR RESEARCH USE ONLY

NOT FOR USE IN CLINICAL DIAGNOSTIC PROCEDURES

12th Edition (Revised in Aug, 2016)

[PROPERTIES]

Source: Prokaryotic expression

Host: *E.coli*

Residues: Ser19~Asn178

Tags: N-terminal His Tag

Subcellular Location: Secreted

Purity: > 90%

Traits: Freeze-dried powder

Buffer formulation: 100mMNaHCO₃, 500mMNaCl, pH8.3, containing 0.01% SKL, 5% Trehalose.

Original Concentration: 200µg/mL

Applications: Positive Control; Immunogen; SDS-PAGE; WB.

(May be suitable for use in other assays to be determined by the end user.)

Predicted isoelectric point: 8.5

Predicted Molecular Mass: 22.3kDa

Accurate Molecular Mass: 23kDa as determined by SDS-PAGE reducing conditions.

[USAGE]

Reconstitute in 100mM NaHCO₃, 500mM NaCl (pH8.3) to a concentration of 0.1-1.0 mg/mL. Do not vortex.

[STORAGE AND STABILITY]

Storage: Avoid repeated freeze/thaw cycles.

Store at 2-8°C for one month.

Aliquot and store at -80°C for 12 months.

Stability Test: The thermal stability is described by the loss rate. The loss rate was determined by accelerated thermal degradation test, that is, incubate the protein at 37°C for 48h, and no obvious degradation and precipitation were observed. The loss rate is less than 5% within the expiration date under appropriate storage condition.

[SEQUENCE]

```
SP GQGTQSENSC TRFPGNLPHM LRDLRDAFSR
VKTFFQMKDQ LDNILLKESL LEDFKGYLGC QALSEMIQFY LEEVMPQAEN
HDPDIKEHVN SLGENLKTLL RLLRRCHRFL PCENKSKAVE QVKNAFSLQ
EKGVYKAMSE FDIFINYIEA YMTMKIQN
```

[IDENTIFICATION]

```
TGTTGGTCAAGCCGAGGAAATGCTGACCGTCTTTTGGCCAACTGCGGATCTGGGATCGGCGATCTTTCTGGGTAAACCTTTTCTAGTGAAGTACCTGGATATCTCTGAGAACTCTGGAGATTAAAGTATCTGGCTGCGCCCTGGGAAATGCTTTATCTGAAAGTATGCGCGCGAAATCATG
S P G Q G T Q S E N S C T R F P G N L P H M L R D L R D A F S R V K T F F Q H K D Q L D N I L L K E S L L E D F K G Y L G C Q A L S E M I Q F Y L E E V M P Q A E N H
```

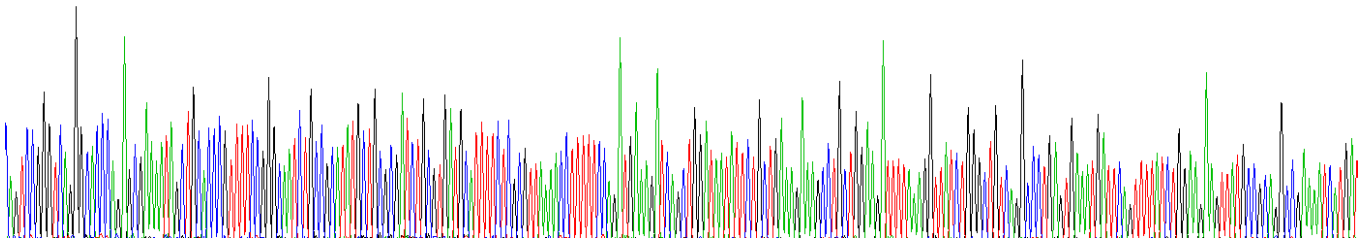


Figure. Gene Sequencing (Extract)

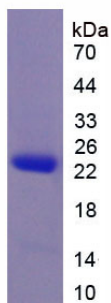


Figure. SDS-PAGE

[IMPORTANT NOTE]

The kit is designed for research use only, we will not be responsible for any issue if the kit was used in clinical diagnostic or any other procedures.